

Rail Jacks / Aligners

TJ10 • PJ10 • RA10



TJ10

Stanley's track jacks are the best jacks available with untouchable power-to-weight ratios and impressive lifting capacity. And the Stanley rail aligner compliments our jacks by simplifying rail alignment work.

TJ10

- Lightest weight of any hydraulic jack in its class.
- Narrow bridge and remote pump models available.
- One piece forged base.
- Low pump handle effort.

PJ10

- Collapsed height of 3.75 in. / 9.5 cm.
- Large stable platform.
- Low pump handle effort.
- Raise & lower controlled by pump handle.

RA10

- Simple to operate—raise & lower by rotating adjustment nut clockwise or counter clockwise.
- Indexing fastener located to provide operating clearance on rail clip seats.
- Works on both concrete and wood ties/sleepers.

Specifications

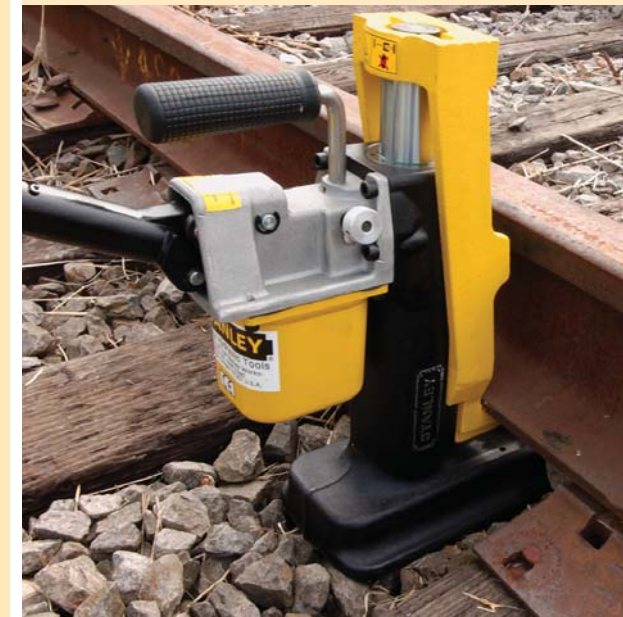
	TJ10	PJ10	RA10
Weight	43.5 lbs (19.7 kg)	34.5 lbs (15.7 kg)	26.5 lbs (12 kg)
Base Length	11 in. (27.9 cm)	10.8 in. (27.4 cm)	18.5 in. (47 cm)
Height (Collapsed)	14.5 in. (36.8 cm)	3.75 in. (9.5 cm)	5.5 in. (140 mm)
Stroke (Total Lift)	8.9 in. (22.6 cm)	4 in. (10.2 cm)	
Lifting Capacity	10 Tons (9,072 kg)	10 Tons (9,072 kg)	
Amount of Travel per Pump Stroke	.15 in. (3.8 mm)	.15 in. (3.8 mm)	



PJ10



RA10



TJ10 Track Jack Order Information

TJ10111M, Integral Pump, Hydraulic Jack w/ Pump Handle

TJ10112M, Integral Pump, Narrow Base Bridge Jack

PJ10 Pancake Jack Order Information

PJ10111, Hydraulic Jack w/ Pump Handle

PJ1011101, Hydraulic Jack w/ Pump Handle, CE

RA10 Rail Aligner Order Information

RA10100, Left & Right Hand Rail Aligner w/ Ratchet

RA10200, Left & Right Hand Rail Aligner w/ Ratchet, Optimized for Concrete Ties